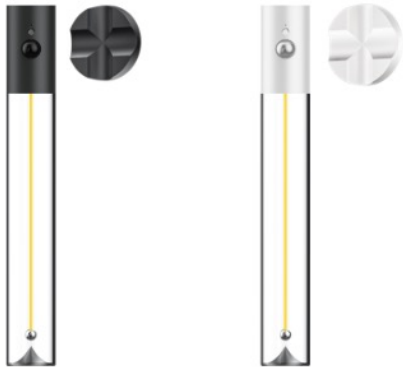


PRODUCT DATASHEET

Fila Sensor



Area of application

- Living areas

Product benefit

- The 1.5mm thin filament boasts flexibility and thermal endurance
- Excellent light quality and 360-degree uniform illumination without shadows
- Wireless sensor light, easy to install and can be placed anywhere

Product feature

- Integrated rechargeable lithium battery which can be charged USB cable



TECHNICAL DATA

Electrical data

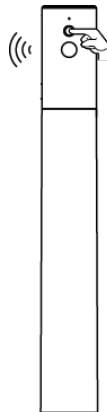
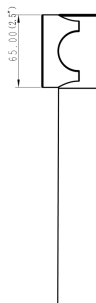
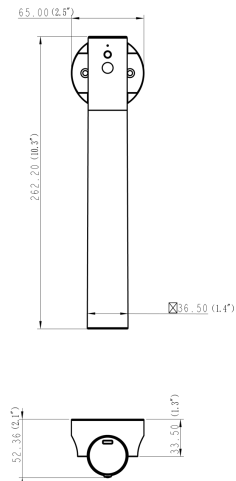
Nominal wattage	0.5W
Nominal voltage	5.0V
Mains frequency	0 Hz
Nominal current	1000mA
Protection class	III
Operating mode	Battery

Photometrical data

Luminous flux	50 lm
Luminous efficacy	MAX 100 lm/W
Color temperature	2700 K
Light color (designation)	Soft White
Color rendering index Ra	> 80
Standard deviation of color matching	< 6 sdc _m
Photobiological safety group acc. to EN62778	RG0
Photobiological safety group acc. to EN62471	RG0

Dimensions & Weight

Length	36.5 mm(1.4")
Width	36.5 mm(1.4")
Height	262.2 mm(10.3")
Product weight	225 g



Click 1 time: Turn on the switch to activate the sensing function.

*3M Sensing Area, 25S Delay Light, 120° Sensing Angle

unit: mm/Inch

Materials & Colors

Product color	Smoky / White
Housing color	Clear
Body material	PC

Application & Mounting

Ambient temperature range	-20 °C...+40 °C
Type of connection	USB
Type of protection	IP20
Function	3M Sensing Area, 25S Delay Light, 120° Sensing Angle
Mounting type	Portable
Application environment	Indoor
LED module replaceable	Not replaceable
With light source	Yes

Lifespan

Lifespan L70/B50 at 25 °C	15000H
---------------------------	--------

1) t_{fh} : L70 / B50 @ 25 °C (Ta), t_{fh} : L80 / B10 @ 25 °C (Ta), t_{fh} : L90 / B10 @ 25 °C (Ta)

BATTERY

Type of Battery	Lithium ion
Battery size [GMS]	X802540 40mm*25mm*8mm
Number of included batteries	1
Nominal voltage of battery	3.7V
Nominal capacity of battery	800mAh
Battery Charging time	2H
Usage time after fully charged	6H

Certificates & Standards

Standards	CE/FCC/RohS/REACH
Battery	UN38.3

EQUIPMENT / ACCESSORIES

- 1m usb-type c charging cable include

LOGISTICAL DATA

Packaging unit (Pieces/Unit)	Dimensions (length x width x height)	Gross weight	Volume (CBM)
Color box(1pcs/1box)	76 mm x72 mm x319mm(3.0"x2.8"x12.6")	310 g	0.0017 m ³
Shipping box(20pcs/1box)	326mm x 385mm x 339mm(12.8"x15.2"x13.3")	5372 g	0.043 m ³

DISCLAIMER

Subject to change without notice. Errors and omission excepted. Always make sure to use the most recent release.